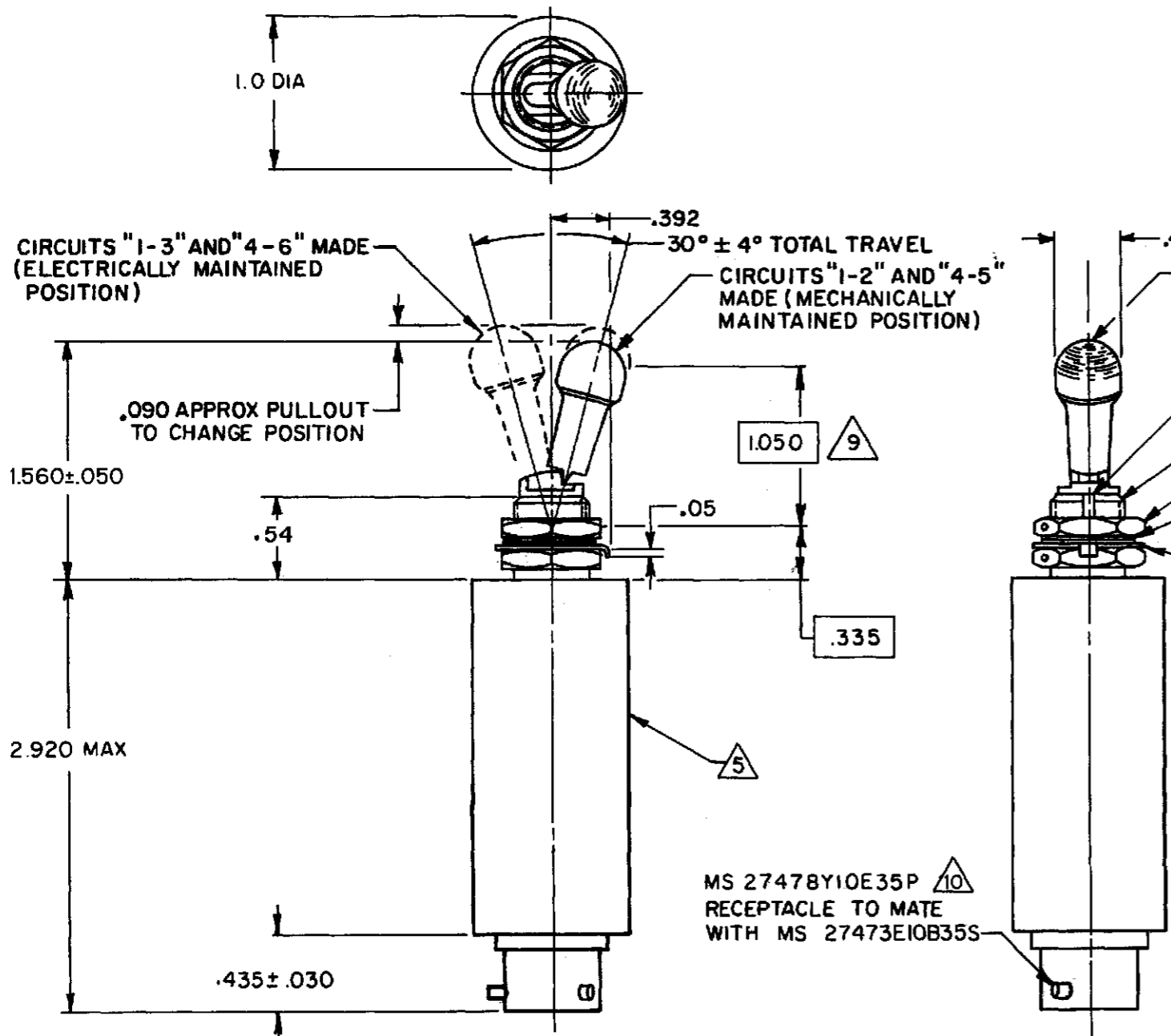
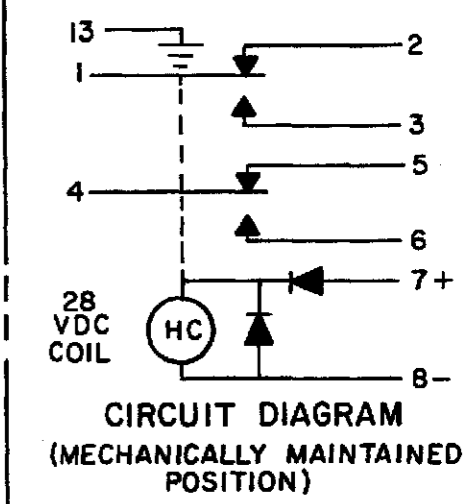


MICRO SWITCH
a Honeywell Division

FED. MFG. CODE 91929

SWITCH - TOGGLE
(MAGNETIC HOLD-IN)

CATALOG LISTING
26ET96-R-G



- .072 ± .004 WIDE X .031 DEEP KEYWAY TO WITHIN .250 OF SHOULDER
- 15/32-32 UNS THREAD TO WITHIN .090 OF SHOULDER
- HEX NUT .559 ACROSS FLATS X .093 THICK (2) (MS25082-C21) 8
- INTERNAL TOOTH LOCKWASHER .60 DIA. X .018 REF THICK (MS35333-136) 8
- KEYING WASHER (MS25081-C4) .72 DIA X .040 THICK, TAB .110 WIDE 8

- NOTES**
- 1 - EXPOSED PARTS ARE OF CORROSION RESISTANT MATERIAL OR ARE SUITABLY PROTECTED TO PREVENT CORROSION. ENCLOSURE FINISHED WITH BLUE EPOXY BASED ENAMEL COLOR NO. 25184 PER FEDERAL STANDARD 595
 - 2 - SWITCH SEALED PER MIL-S-5594
 - 3 - HOLD IN VOLTAGE: THE MINIMUM SPECIFIED VOLTAGE AT WHICH THE LEVER WILL REMAIN ACTUATED. HOLD IN MAY OCCUR AT A LOWER VALUE.
DROP OUT VOLTAGE: THE VOLTAGE RANGE IN WHICH THE LEVER WILL BE RELEASED
 - 4 - CIRCUITS CAN BE TRANSFERRED MANUALLY. ENERGIZING THE COIL WILL NOT CAUSE TRANSFER OF CIRCUITS
 - 5 - CIRCUIT IDENTIFICATION IS SHOWN ON SWITCH
 - 6 - SWITCHES DO NOT NECESSARILY OPERATE SIMULTANEOUSLY
 - 7 - THE DIODES ARE JANTXV TYPE AND LIMIT THE EMI: SPIKES (TRANSIENTS OF DURATION LESS THAN 500 MICRO SECONDS) GENERATED BY THE SWITCH COIL SHALL NOT EXCEED +42 VOLTS OR -14 VOLTS ABSOLUTE
 - 8 - HARDWARE MAYBE FURNISHED UNASSEMBLED PER MIL-S-5594
 - 9 - FORCE TO BE APPLIED AT THIS POINT IN A DIRECTION PERPENDICULAR TO THE LEVER LONGITUDINAL AXIS
 - 10 - POLARIZING KEY IN LINE WITH KEYWAY WITHIN ± 10°

CATALOG LISTING
26ET96-R-G
 PAGE 1 OF 1
 REPLACES
 RELEASE NO. PR-14840
 CHECK
 ISSUE
6
 REVISIONS
 A CO-79565 G J W 7 AUG 96
 B CO-92588 C S L 12 MAR 98
 CHECK
 M A M 14 AUG 96
 CHECK
 M A M 7 AUG 96
 DRAWN
 G J W 7 AUG 96
 ORMTEK

THIS DRAWING COVERS A PROPRIETARY ITEM AND IS THE PROPERTY OF MICRO SWITCH, A DIVISION OF HONEYWELL. THIS DRAWING IS NOT TO BE COPIED OR USED WITHOUT THE APPROVAL OF MICRO SWITCH

THIRD ANGLE PROJECTION

| | | |
|--------------------------------------|-----------------------------|---|
| CHARACTERISTICS | ELECTRICAL DATA | SCALE FULL |
| SOLENOID RATING AT 20° | CONTACT ARRANGEMENT | DO NOT SCALE PRINT |
| STEADY STATE LIMITS ----- 20-30 VDC | S P D T (2) | UNLESS OTHERWISE SPECIFIED TOLERANCES ARE |
| HOLD IN ----- 15 VDC | | ONE PLACE (.0) ±.030 |
| DROP OUT ----- 0.5-15 VDC | | TWO PLACE (.00) ±.015 |
| OVERRIDE FORCE AT 30 VDC 9 2.5-10 LB | | THREE PLACE (.000) ±.005 |
| OPERATING FORCE ----- 9 --7 LB MAX | | ANGLES ± |
| COIL RESISTANCE ----- 220 OHM MIN | | WEIGHT 7.0 OZ MAX |
| PULL TO UNLOCK ----- 3-5 LBS | | |
| | RATING IN AMPERES | |
| | SEA LEVEL 65,000 FT | |
| | RES IND MOTOR RES IND MOTOR | |
| 28 VDC | 4 2.5 4 4 2.0 4 | |