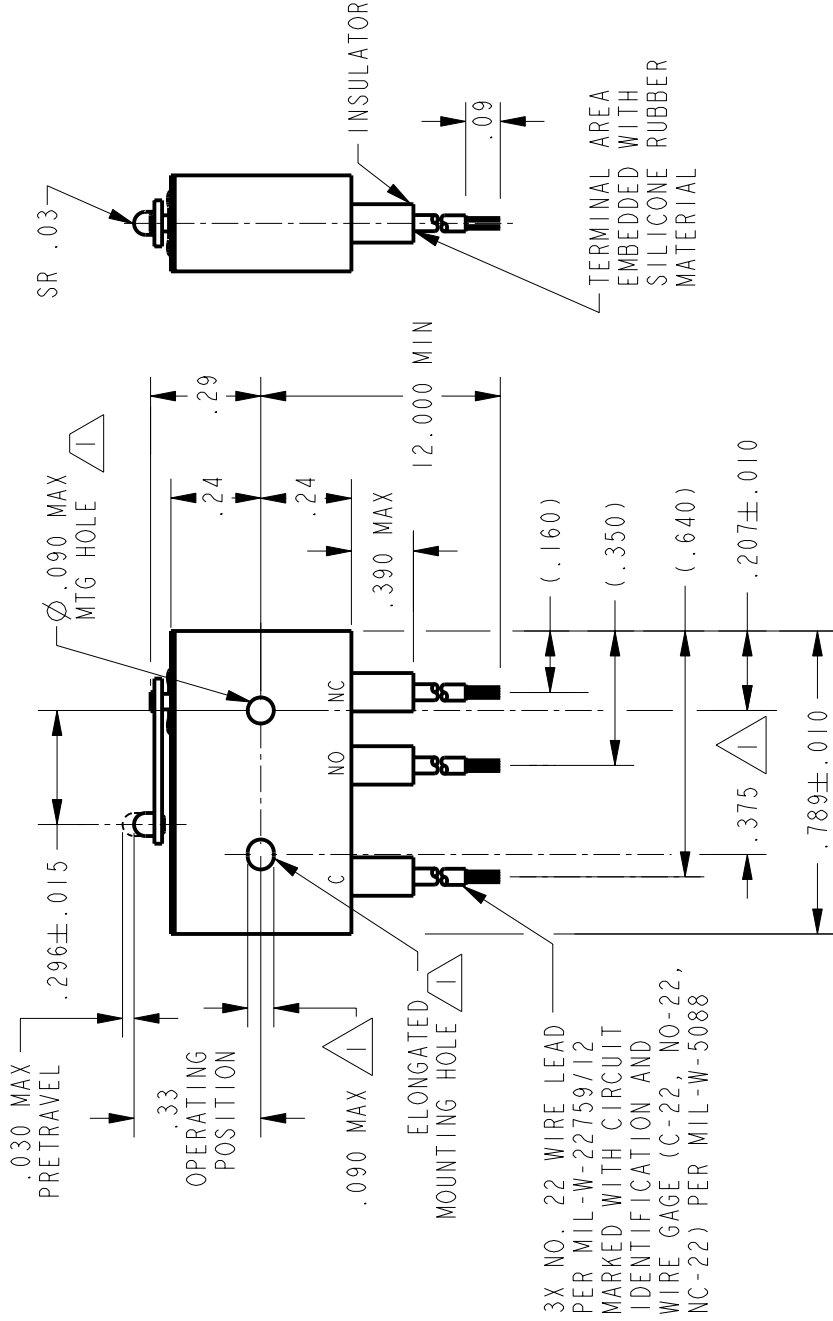
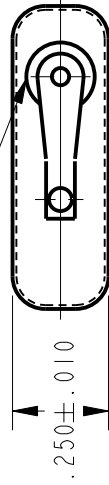


WOBBLEFRAM ACTUATOR SEAL



3X NO. 22 WIRE LEAD PER MIL-W-22759/12 MARKED WITH CIRCUIT IDENTIFICATION AND WIRE GAGE (C-22, NO-22, NC-22) PER MIL-W-5088

NOTES

- 1 MOUNTING HOLES WILL ACCEPT PINS OR SCREWS OF $\varnothing .087$ MAX ON $.375 \pm .002$ CENTERS FOR USE IN TEMPERATURE RANGE -85°F TO $+500^{\circ}\text{F}$ (DOWN TO -300°F IF WIRE LEADS ARE NOT FLEXED)
- 2 - HERMETICALLY SEALED (METAL-TO-METAL, GLASS-TO-METAL)
- 3 - ALL EXPOSED PARTS ARE OF CORROSION RESISTANT MATERIALS
- 4 - WEIGHT OF SWITCH ONLY IS .014 LB MAX, WEIGHT OF CONDUCTOR GROUP ONLY IS .14 LB MAX PER FOOT
- 5 - DO NOT: APPLY MORE THAN 1 1/2 INCH-LBS OF TORQUE WHEN TIGHTENING MOUNTING SCREWS
- 6 - 24K GOLD MOVABLE CONTACT
- 7 - GOLD ALLOY STATIONARY CONTACTS
- 8 - ANSI Y14.5M-1982 APPLIES

THIS DRAWING COVERS A PROPRIETARY ITEM AND IS THE PROPERTY OF MICRO SWITCH. A DIVISION OF HONEYWELL. THIS DRAWING IS NOT TO BE COPIED OR USED WITHOUT THE APPROVAL OF MICRO SWITCH.



| CHARACTERISTICS | | ELECTRICAL DATA | |
|--------------------------|----------|----------------------------------|--|
| OPERATING FORCE----- | 7 OZ MAX | CONTACT ARRANGEMENT | |
| RELEASE FORCE----- | 1 OZ MIN | S P D T | |
| DIFFERENTIAL TRAVEL----- | .006 MAX | 28 VOLTS DC RATING | |
| OVERTRAVEL----- | .003 MIN | INDUCTIVE -- SEA LEVEL - 1/4 AMP | |
| | | 70,000 FT - 1/4 AMP | |
| | | RESISTIVE -- SEA LEVEL - 1/2 AMP | |
| | | 70,000 FT - 1/2 AMP | |

| SCALE | 2:1 | SCALE PRINT |
|---|-----|-------------|
| UNLESS OTHERWISE SPECIFIED TOLERANCES ARE | | |
| ONE PLACE (.0) | | ±.030 |
| TWO PLACE (.00) | | ±.015 |
| THREE PLACE (.000) | | ±.005 |
| ANGLES | | ± |
| WEIGHT | | 5 |

20HM1-1
CATALOG LISTING
PAGE 1 OF 1
3 ISSUE
CHECK
RELEASE NO. PR-19736
REPLACES -

REVISIONS
A 206039
C.S.L.
18 JUL 02
CHECK
18 JUL 02
S A V
CHECK
18 JUL 02
C S L
18 JUL 02
DRAWN
PTC/CAD 2D